

The Premier Portfolio of Pool Maintenance Equipment & Accessories

TABLE OF CONTENTS

Brushes/Scrubbers	3
Skimmers/Leaf Rakes	3
Floating Dispensers	4
Thermometers	4
Leaf Traps/Leaf Eaters	5
Test Kits	6
Poles and Other Accessories	8
Vacuums.....	9
Mini Vac.....	10
Floats/Safety Equipment	10
Maintenance Kits	10
Signs	11
Replacement Baskets	11
Miscellaneous Accessories.....	12
Motor Cover	12
Discharge Hose	12
Winterizing Plugs.....	12
Silicone Lubricant	12
Ladder Bumpers	12
Service Pro Maintenance Equipment	13
Brushes	13
Skimmers/Leaf Rakes	13
Leaf Traps.....	13
Poles	14
Commercial Vacuum Head.....	15
Super ProVac Vacuum	15
ProVac Vacuum	15





BRUSHES/SCRUBBERS

902	18" Aluminum Back. UV-stabilized poly bristles	Pack 12	R111316
92	18" Aluminum Back. Nylon bristles	Pack 12	R111046
420	18" Molded Back. Poly bristles. Round ends	Pack 12	R500013
912	18" Molded Back. UV-stabilized poly bristles	Pack 12	R111366
912VL	912 With Vinyl End Caps	Pack 12	R111386
410	6" Molded Back Algae Brush. Stainless bristles	Pack 12	R500012

ACID WASH/DECK/TILE BRUSH

10" Blue/White Crimped Bristles	Pack 25	R111584
--	---------	---------

SCRUBBERS

650	Scrubber. Multipurpose. 3 interchangeable pads	Pack 12	R111556
651	Universal Scrubber. Swivel joint handle. 4 ⁵ / ₈ " x 10" pad	Pack 12	R111560



See Pentair catalog or price list for replacement pads.



SKIMMERS/LEAF RAKES

119	Skimmer. Blue molded frame with reinforced aluminum. Raised lip for scraping. Aluminum handle	Pack 12	R121026
124S	Spa/Aboveground Skimmer. Polyester screen molded into polypropylene frame. Complete with magnet. Fits 1 ¹ / ₄ " poles	Pack 12	R121166
124H	Long-Handle Skimmer With 1" x 4' Aluminum Pole	Pack 12	R121186
122	Leaf Rake. 3/8" solid aluminum rod frame with blue fiberglass net. Frame covered with squeegee for scraping bottom of pool	Pack 12	R121106
123	Econo Leaf Rake. White molded frame with reinforced aluminum, raised lip and blue fiberglass net	Pack 12	R121126

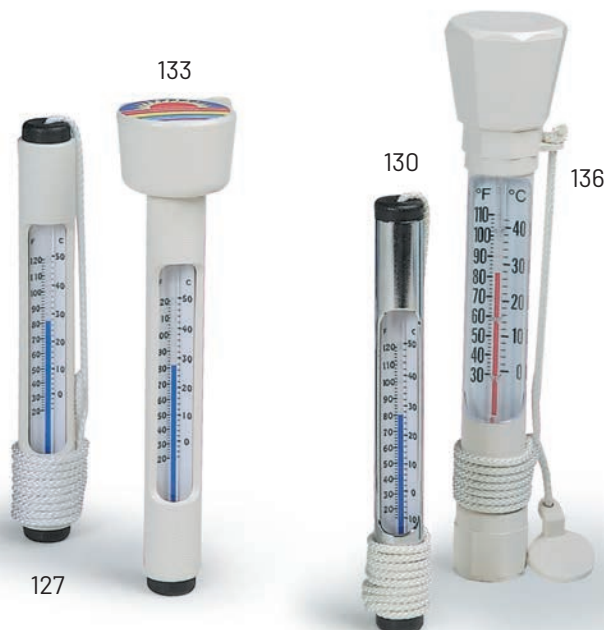
FLOATING DISPENSERS

- 330 Large Floating Dispenser.** Twist lock cap. Holds 1" or 3" tablets.
 Adjustable control ring Pack 12 R171086
 Optional protective screen Bulk R18856
- 330 Packed With Protective Screen Installed** Pack 12 R171060
- 335 Spa Floating Dispenser.** Dial dispenser controls.
 1" chlorine or bromine tablets or sticks Pack 12 Beige/White R171090
 Pack 12 Blue/White R171074
 Optional protective screen Bulk R18855
- 332 Splasher Pool/Spa Floating Dispenser.**
 Holds 11 oz. of 1" tablets. Molded dispensing windows
 with positive control device Pack 12 R171130



THERMOMETERS

- 127 Tube Thermometer.** ABS molded tube. 3' cordBP* 24 R141036
 Bulk 48 R141046
- 130 Chrome/Brass Thermometer.**
 Glass tube in brass tubing. 3' cordBP* 24 R141076
 Bulk 48 R141086
- 133 Floating Thermometer.** ABS molded tube with flotation capBP* 24 R141106
- 136 E-Z Read Combo Sink/Float Thermometer.** ABS with shatterproof lens. Snap on/
 off flotation cap. 3' leash w/anchor plate. Packed clamshell
 hang or stand Pack 24 R141200
 *Blister pack.





R172653

186A/B

LEAF TRAPS/LEAF EATERS



185



360476

Snap Open Leaf Trap. Clear chamber with snap open and close lid and large molded handle for ease of use. Use with vacuum heads or automatic suction-side pool cleaners. Traps debris before it reaches pump pot or filter.

- | | | | |
|-------------|---|--------|---------|
| 186A | 1½" Snap Open Leaf Trap With Debris Bag. 3' of 1½" vacuum hose | Pack 6 | R211084 |
| 186B | 2" Snap Open Leaf Trap With Trap Bag. 3' of 2" vacuum hose | Pack 1 | R211086 |
| | Optional 25 sq. ft. cartridge with plug | Bulk | R172653 |
| | Medium Capacity Canister. 1-½" hose connection | Pack 1 | 360476 |

See Pentair catalog or price list for optional leaf trap bags.

Leaf Eater® Pool Cleaner. Venturi action top skimmer or bottom cleaner draws debris into filter bag. Works with garden hose or auto pool cleaner hose. Includes swivel wheels for hard surfaces and brushes for vinyl liner pools.

- | | | | |
|-------------|---|--------|---------|
| 185 | Leaf Eater Cleaner With Wheels and Brushes in Display Box | Pack 3 | R211036 |
| 185B | Leaf Eater Cleaner With Wheels and Brushes. No Display Box | Pack 6 | R211046 |

See Pentair catalog or price list for high-capacity bags and replacement parts.



TEST KITS

TEST STRIPS

- 3-Way Free Cl/Br, pH, TA.** 50-strip bottle. English, French and Spanish label with counter dispenser Pack 12 R161566
- 5-Way Free Cl/Br, Total Cl, pH, TA, Total Hardness.** 50-strip bottle. English, French and Spanish label Pack 12 R161568
- Salt Strip (Sodium Chloride) Blistercard With Display Box.** English, French and Spanish label Pack 12 200060

SPECIALTY TEST KITS

- 1200 Total Hardness Test Kit.** Indicates ppm or in grains. Vial and 2 solutions in compact plastic boxPack 24 R151276
- 1300 Total Alkalinity Test Kit.** Indicates ppm in pool or spa water. Vial and 3 solutions in compact plastic boxPack 24 R151306
- 79 Cyanuric Acid/Turbidity Test Kit.** Indicates ppm of CA in pool water. Vial and 8 oz. test solution in styrene clear top boxPack 6 R151226
- 151 Leak Detector.** Attaches to tele pole and confirms leak by seepage of red dye into the leak. Also spot treats algae or rust. Includes leak solution Pack BP* R220006
Replacement solution ¾ oz Bulk R220008
- QT QuickTest™ Kit.** Digitally test salt, TDS and temperature with handheld test instrument. Includes meter, 50 phosphate test strips, water sample cup, two vials of conductivity standard test solutions and carrying case Pack Each 200064
Replacement phosphate test strips Pack 50 200065
Replacement QuickTest calibration solution Pack 12 200066

Reagents and refill solutions available in a variety of sizes and packaging.

NOTE: Products containing OTO not available in the state of California.



TEST KITS

pH AND CHLORINE TEST KITS

- 752** **"2 in 1" Test Kit.** ½ oz. OTD and preblended pH, Cl range 0.3–3.0, blue hinged casePack 12 R151076
- 78HR** **"All-in-One" 4-Way Test Kit.** Cl, pH, acid demand, total alkalinity, Lucite test cell with wide standards, 1 oz. No. 1, No. 2, No. 3, ½ oz. No. 4, No. 5, water test booklet, blue display boxPack 12 R151186

BROMINE TEST KITS

- 756** **"2 in 1" Bromine Test Kit.** ½ oz. OTO and pH, Br range 0.5–6.5, yellow hinged casePack 12 R151196



DPD TEST KITS

- 77DPD** **4 in 1 Chlorine/Bromine Test Kit.** DPD No. 1 and No. 3 tablets, solutions No. 2, No. 3, No. 4, No. 5, Lucite test cells with wide standards Pack 12 R151190
- 78DPD** **"All-in-One" Test Kit.** Total and combined Cl, pH, acid demand and total alkalinity, Lucite test cell, 50 each DPD No. 1 and No. 3 tabs, 1 oz. No. 2, No. 3, ½ oz. No. 4, No. 5, water test booklet, red display box Pack 12 R151246
- 78DPD+** **"All-in-One" Plus Test Kit.** For servicemen and homeowners, free, total and combined Cl, cyanuric acid, pH, acid demand, alkali demand and total alkalinity, Lucite test cell, 50 each DPD No. 1 and No. 3 tablets, 10 cyanuric acid tablets, 1 oz. No. 2, No. 3, ½ oz. No. 3B, No. 4, No. 5, water test booklet, red display box Pack 12 R151248

PRO-11 MINI LAB

- Pro-11** **Professional Test Lab** Pack 6 R151716

NOTE: Products containing OTO not available in the state of California.

POLES

2-PIECE TELESCOPIC—METAL CAM

- 812-16** 8' to 15½' Pack 12 R191046
- 812-8** 4' to 7½' Pack 12 R191066

2-PIECE TELESCOPIC—E-Z LOCK DEVICE

- 806-16** 8' to 15½'. Blue smooth Pack 12 R191306

1-PIECE STRAIGHT POLES WITH POLE CAP

- 820-16** Full 16' length Pack 12 R191116
- 820-12** Full 12' length Pack 12 R191106



820-12
820-16

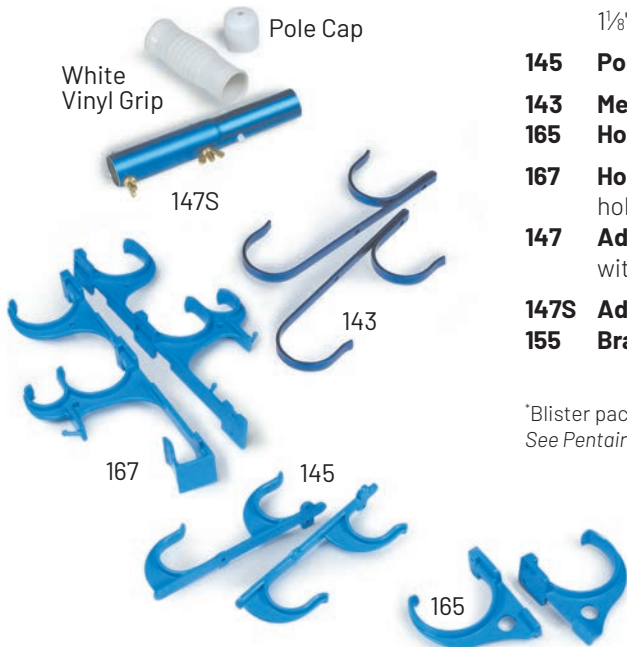
812-16

806-16

POLE AND OTHER ACCESSORIES

- 1125 Pole Cap.** Fits 1⅝" diameter poles Bulk R22006
- 900 Pole Cap.** Fits 1¼" diameter poles Bulk R22007
- White Vinyl Handle Grip**
 - 1" diameter Bulk R22025
 - 1⅝" diameter Bulk R22054
- 145 Pole Hangers.** Molded ABS with screws BP* 24 R221036
- 143 Metal Pole Hangers.** Blue anodized aluminum. Includes screws. BP* 24 R221042
- 165 Hose Hangers.** Molded ABS. Includes screws BP* 24 R221046
- 167 Hose, Pole, Accessory Hangers.** Large multipurpose hangers hold variety of products BP* 12 R221054
- 147 Adapter.** Fits all pool poles. 3 pieces per set with 6 brass bolts and nuts BP* 24 R221126
- 147S Adapter.** One piece per BP card. 2 brass bolt and nuts Pack 24 R221136
- 155 Brass Bolt and Wing Nut** Bulk R221156
6 Sets BP Bulk R221166

*Blister pack.
See Pentair catalog for replacement parts.



VACUUMS

VINYL LINER VACUUMS

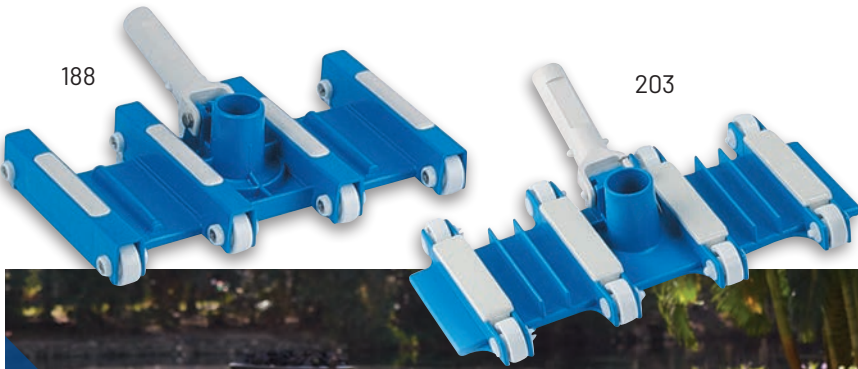
- 191SW** **Econo Vac Head.** Blue ABS with 2 enclosed weights Pack 12 R201108
- 193** **Oval Vinyl Liner Vacuum.** Features replaceable brushes, vinyl bumper, enclosed weights and snap-adapt handle. Fits 1/4" and 1/2" vacuum hose Pack 6 Clamshell R201350
- 194** **Econo Triangular Vac Head.** Weighted tri-vacuum includes replaceable brushes and snap-adapt handle. Fits 1/4" and 1/2" vacuum hose Pack 6 Clamshell R201392
- 196** **Clear View Vacuum.** Triangular shaped and weighted see-thru design features two-piece 1/4-1/2" vacuum hose swivel connection. Protective vinyl bumper and adjustable replaceable brushes Pack 6 Clamshell R201398



FLEXIBLE VACUUMS

- 188** **12" Flexible Vacuum.** Rugged polyethylene housing features enclosed weights and adjustable solid molded wheels Pack 6 Clamshell R201112
- 203** **SuperFlex Vacuum.** Economy 14" UV ray inhibited body and enclosed weights. Spring-loaded snap-adapt handle and factory set replaceable wheels Pack 6 Clamshell R201388

See Pentair catalog or price list for replacement parts.



MINIVAC™ VACUUM

204 MiniVac Venturi jet action designed for use with garden hose or 1¼"-1½" vacuum hose. Complete with debris bag, hose adapter and brush attachment for soft surfaces and nozzle attachment for hard surfaces. Includes shut-off valve and snap-adapt handle to attach tele or straight pole Display Box 12 R201146

Vac-Mate® Vacuum/Skimmer. Skims pool surface continuously while cleaner is operating. Traps debris in Vac-Mate Vacuum/Skimmer basket before it reaches pump pot Pack 6 R211100



204



Safety Float Lines

FLOATS/SAFETY EQUIPMENT

Unsinkable, durable polyethylene floats come in a variety of sizes and color combinations, including 3" x 5" ovals, 5" x 9" ovals and 7" x 7" rounds. Safety float lines are also available in sizes to fit standard and some custom pool widths. See Pentair catalog or price list for complete listing, including float keepers.

- 153 Safety Pool Hook.** Fits standard straight pole. Ideal as teaching aid or for emergencies Pack 12 R221026
- Hardware Set.** Bulk R221030
- 58 Swim Teacher.** Two 7" x 7" polyethylene floats with 30" PVC tube bar Pack 6 R221056

MAINTENANCE KITS

Pentair offers variety of stock and custom designed maintenance kits packaged in attractive, handy suitcase designs with handles.





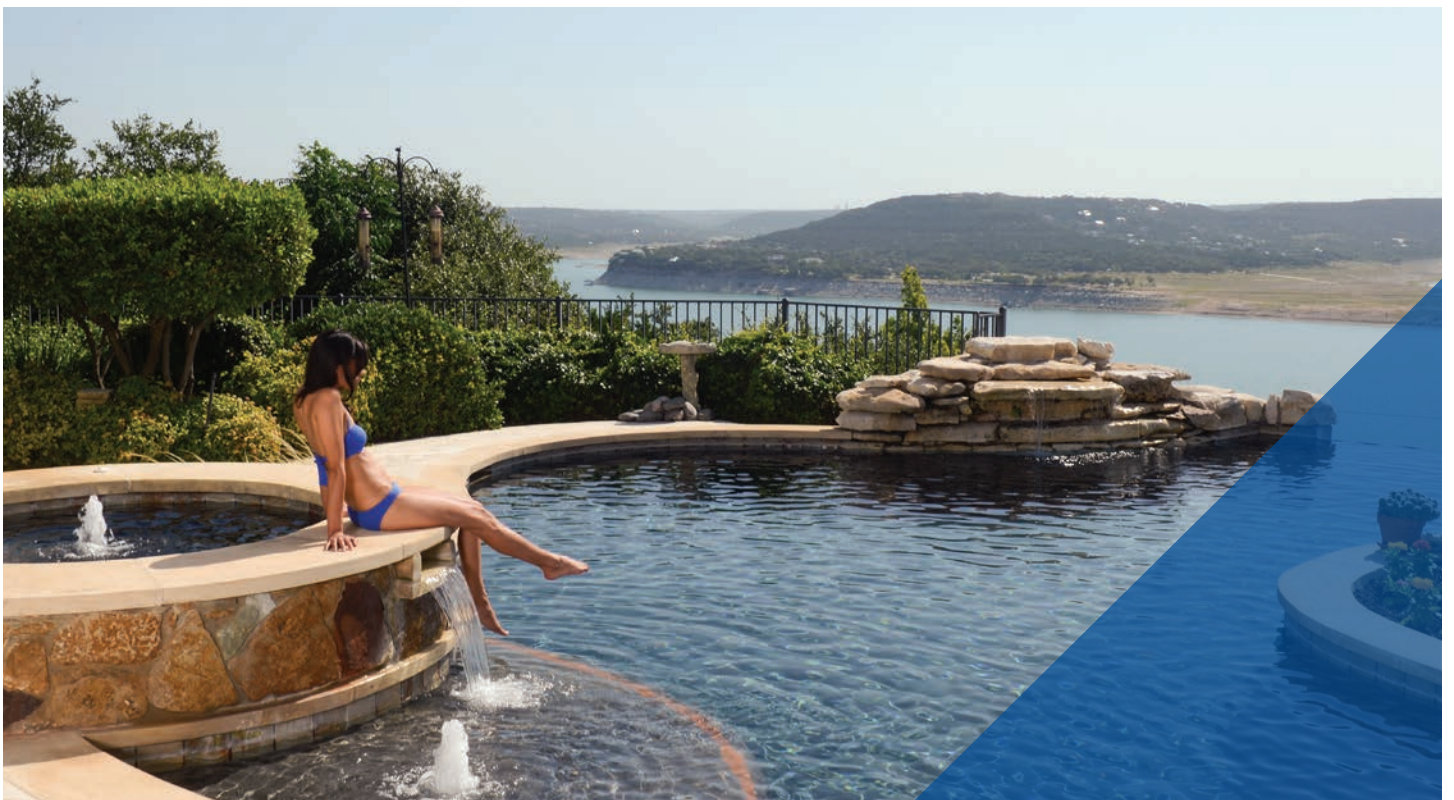
SIGNS

Weather-resistant, high-impact plastic, screened in permanent inks and finished with brass grommets ready for hanging.

See the Pentair catalog or price list for complete selection available.

REPLACEMENT BASKETS

Superior injection-molded replacement baskets designed to fit popular skimmer wells and pump pots.



MISC. ACCESSORIES

MOTOR COVERS

325 Motor Cover. Protects outdoor motors from elements. Fits 1/3 to 2HP sizes. Molded ABS snaps together. Poly bag with header. Grey..... Pack 6 R221016

DISCHARGE HOSE

2" x 200' Boxed R221224
 2" x 50' with stainless-steel clamp Boxed R221220
 1½" x 200' Boxed R221222
 1½" x 50' with stainless-steel clamp Boxed R221218

WINTERIZING PLUGS

850 1½" Pipe Thread Bulk R22010
852 2" Pipe Thread Bulk R22011

SILICONE LUBRICANT

For use on rubber seals, gaskets and o-rings.

¾ oz Bulk R172036
 ¾ oz Counter Display of 30 R172351

LADDER BUMPERS

Inner/outer design with pliable starter plug for easy installation. Medium density and fits standard 1.900 OD stainless-steel tubing.

Blister pack card (2 per card)..... Bulk R221300
 Bulk Pack 288 R221298



SERVICE PRO MAINTENANCE EQUIPMENT

The Service Pro line for pools and spas features our toughest, most durable products that stand up to even the most rigorous service schedule.



BRUSHES

907	18" Metal Back. Blended nylon and stainless-steel bristles	Pack 12	R111358
718	18" Metal Back. Stainless-steel algae bristles	Pack 12	R111646
709	9" Metal Back. Stainless-steel algae bristles	Pack 12	R111626
604A	6" Metal Back. Stainless-steel algae bristles	Pack 1	R111616



SKIMMERS/LEAF RAKES

126	Heavy-Duty Skimmer. 3/8" solid anodized aluminum rod. Deep net molded into ABS frame and snaps onto aluminum frame for easy replacement	Pack 12	R121196
126R	Skimmer Replacement Frame and Net. For 126	Pack 12	R121216
117	Pro Leaf Rake. Has replaceable frame with heavy-duty fiberglass net. Frame snaps onto 3/8" solid anodized aluminum rod. Replaceable squeegee for scraping pool bottoms.....	Pack 12	R121230
117R	Pro Leaf Rake Replacement Frame and Squeegee	Pack 12	R121232

LEAF TRAPS

186	Snap Open Leaf Trap. Features snap open and close lid with heavy-duty carry handle. Can even be opened while underwater. Includes 3' vacuum hose and polyester debris bag. Options available include heavy-duty basket, 25sq. ft. cartridge filter with plug and mesh, canvas and sand/silt bags.		
186A	1 1/2" Leaf Trap	Pack 6	R211084
186B	2" Leaf Trap	Pack 1	R211086
	Medium-Capacity Canister. 1-1/2" hose connection	Pack 1	360476



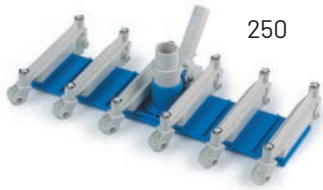


POLES

Rigid fiberglass poles with E-Z lock compression locks are manufactured to withstand abuse required by service pros and in areas where protection from electrical shock is mandatory. UV protective coating helps prevent splintering with age.

808-22	Extends to 22' Length.Pack 6	R191101
808-16	Extends to 16' Length.Pack 6	R191092
808-12	Extends to 12' Length.Pack 6	R191091
818-16	16' Straight.Pack 3	R191104
818-12	12' Straight.Pack 6	R191095
812-24	2-Piece Aluminum. Metal cam. Extends to 23½'Pack 12	R191090
806-24	2-Piece Aluminum. E-Z Lock. Extends to 23½'Pack 12	R191088
	Replacement Tip for Fiberglass Poles. Bulk	R07023





250

COMMERCIAL VACUUM HEAD

250 Swivel Wheel Vacuum Head. 19" body has 1½" swivel hose connection to prevent twisting. 2" hose fits on body. Fully enclosed weights and adjustable polyurethane wheels swivel in any direction ... Pack 4 R201126



241

SUPER PROVAC® FLEXIBLE COMMERCIAL VACUUMS

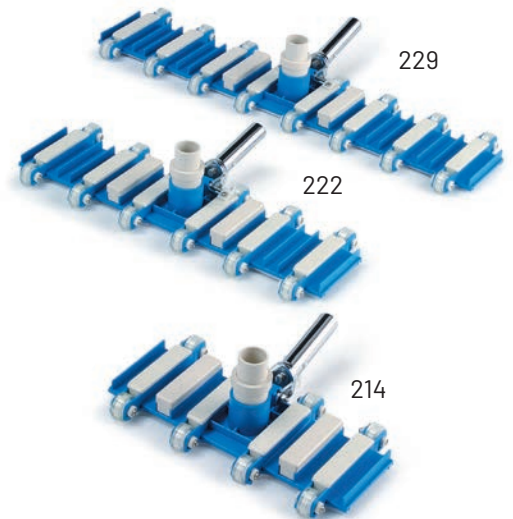
241 41" width vacuum features ProVac technology, 22 ball bearing polyurethane adjustable wheels, dual manifold with handle joining assembly. Includes adapters for 1½" or 2" vacuum hose Pack 1 R201298

PROVAC FLEXIBLE COMMERCIAL VACUUMS

These superior vacuum heads will clean a pool bottom in up to half the time, even with low flow suction. Superior suction chamber concentrates vacuum velocity from both ends, as well front to back. Has metal swivel handle on stainless-steel shaft and strategically placed weights for balance and ease of operation. Adjustable wheels increase or decrease vacuum velocity and special flex strips guide debris into exclusive suction chamber. Swivel connection for 1½" vacuum hose while 2" fits directly on body. Recommended for service pros who demand the best.

- 214** 14" Width. 8 wheels Pack 6 R201276
- 222** 22" Width. 12 wheels Pack 1 R201286
- 229** 29" Width. 16 wheels Pack 1 R201296

Each ProVac vacuum is assembled with white "short leg" strips for leaves and large debris. A blue "long leg" strip is included for sand, silt and fine debris. Replacements available in 5' lengths.



229

222

214



1620 Hawkins Ave | Sanford, NC 27330 | United States | 800.831.7133 | [pentair.com](https://www.pentair.com)

All indicated Pentair trademarks and logos are property of Pentair Inc. Third party registered and unregistered trademarks and logos are the property of their respective owners.

R5-3004 10/20 ©2020 Pentair. All Rights Reserved.